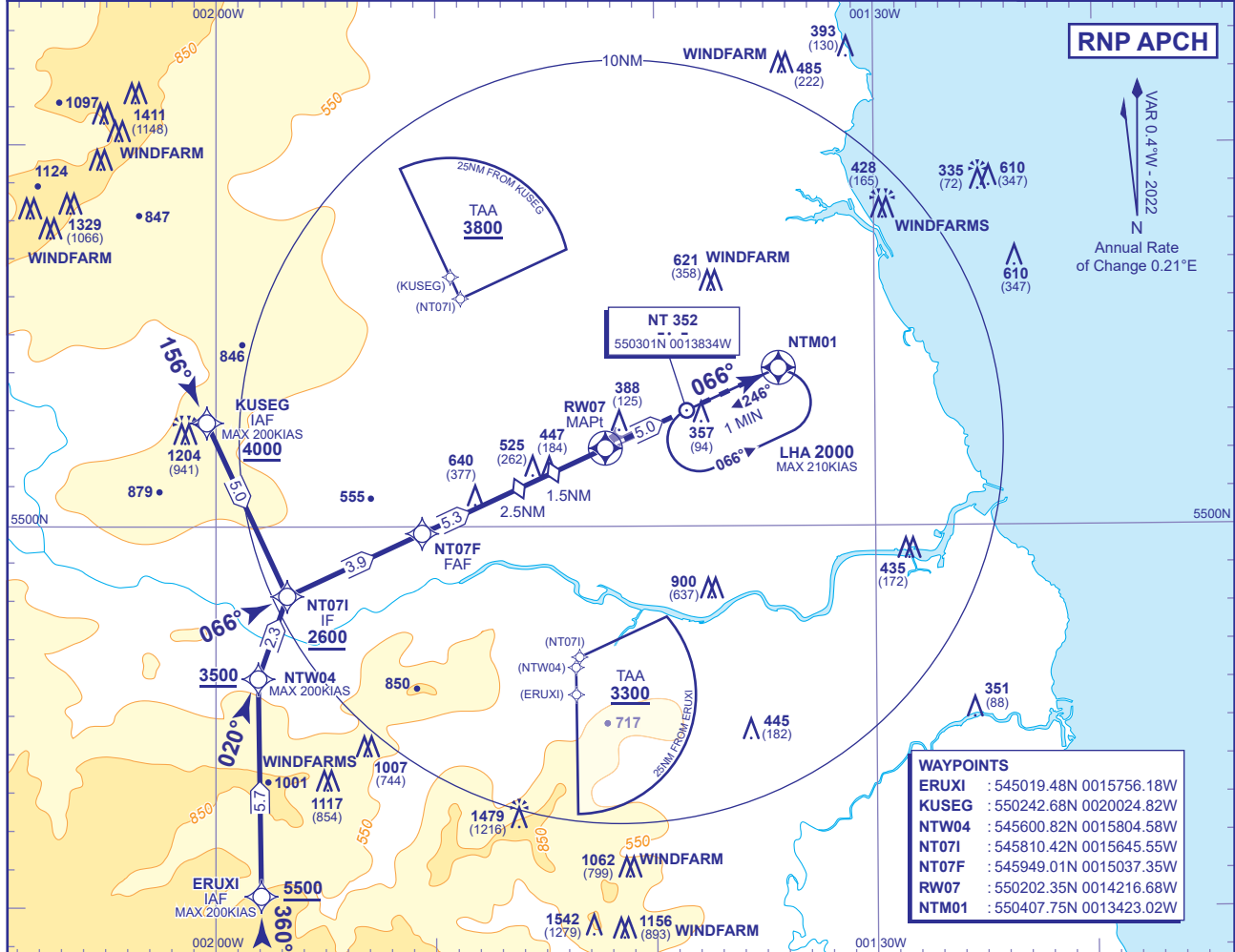


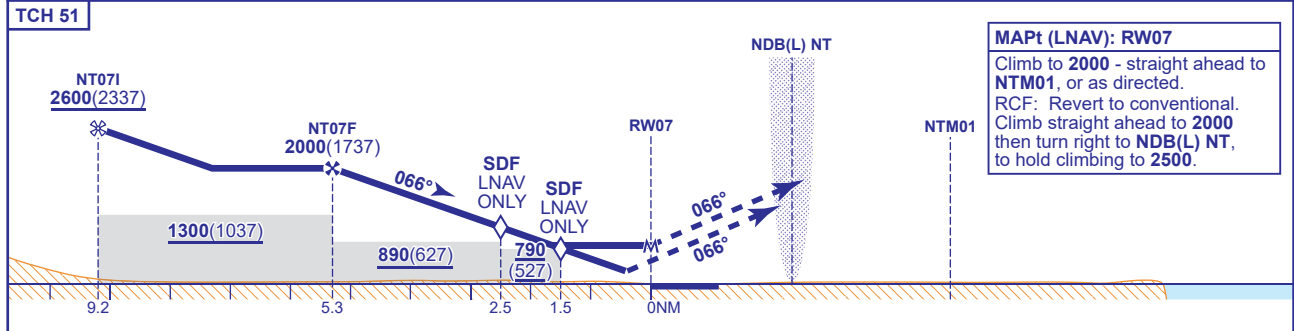
INSTRUMENT APPROACH CHART - ICAO

NEWCASTLE RNP RWY 07 (ACFT CAT A,B,C,D)

<div>36</div> <div>MSA 25NM ARP</div>	APP 124.380	NEWCASTLE APPROACH	AD ELEVATION 266
	TWR 119.705	NEWCASTLE TOWER	THR ELEVATION 263
	121.730	NEWCASTLE GROUND	OBSTACLE ELEVATION 1542 AMSL (1279) (ABOVE THR)
	RAD 124.380, 125.830	NEWCASTLE RADAR	
	ATIS 118.380	NEWCASTLE ATIS	BEARINGS ARE MAGNETIC
			MIN TEMP -15°C
			TRANSITION ALTITUDE 6000



RECOMMENDED PROFILE VNAV - VERTICAL PATH ANGLE 3.0° (LNAV 5.24%), 318FT /NM					
NM to RW07	5	4	3	2	1
ALT(HGT)	1910(1647)	1590(1327)	1270(1007)	950(687)	630(367)



Aircraft Category		A	B	C	D	Rate of descent	G/S KT	160	140	120	100	80
OCA (OCH)	LNAV/VNAV	570(307)	580(317)	590(327)	600(337)		FT/MIN	850	740	640	530	420
	LNAV	700(437)	700(437)	700(437)	700(437)							
VM(C)OCA (OCH AAL)		Total Area	750(484)	840(574)	1040(774)	1040(774)						

CHANGE (7/24): MAG VAR. MAG TRACKS. MOCA REVISED. VM(C)OCA (OCH AAL) B MINIMA REVISED.